



STONEBOR PUMP

McFarland Pump Group

STONEBOR Model C – 8E

**Electric Drive
Chemical Injection Pump**

Flow Rate up to 108 GPD | Pressure up to 3,000 PSI



SPECIFICATIONS

- Positive displacement, self-priming plunger pump.
- It is available with plunger diameters of 1/4" and 3/8" (standard 3/8").
- Volume can be adjusted from 0 to desired stroke length while pump is in operation.
- Volume as low as a pint a day to a maximum of 108 gal. per day(GPD) @ 87 strokes per minute.
- Available in 1-5 heads.
- Weight (with motor) : Simplex (35 lb.), Duplex (40lb.), Triplex (45lb.), Quadruplex (50lb.), Quintuplex (55lb.)
- Stroke length 1"
- Plunger Speed 87.5 stroke per minute.
- Operating Temperature 0 °F to 180 °F
- Typical with methanol, effective temperature range will depend on the injection chemical.
- Oil bath eliminate daily lubrication requirement.
- Dimensions : 20" Length, 12" Width , 8" Height

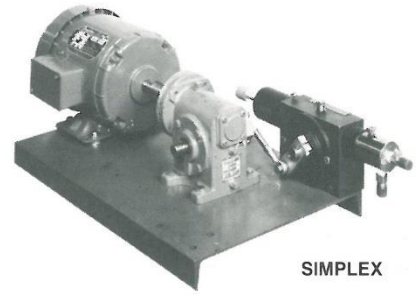
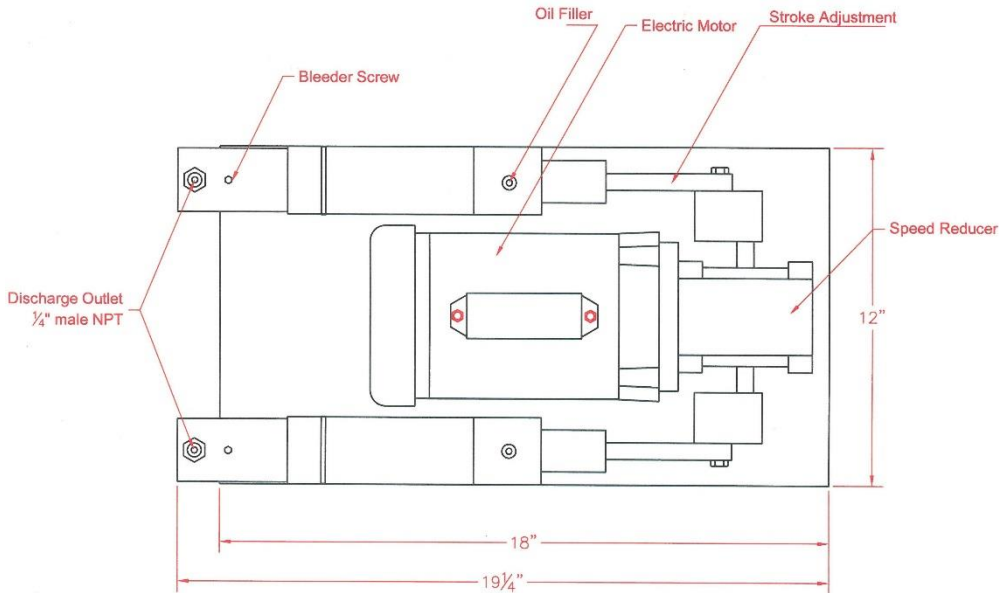
CAPACITY & PRESSURE TABLE

Plunger Size (in)	Stroke	Delivery (GPD)*		Discharge Pressure(psi)	Speed (Stroke/Min)
		Simplex	Duplex		
1/4"	1"	27.00	54.00	3,000	87.5(20:1)
3/8"	1"	61.00	122.0	2,000	87.5(20:1)
1/2"	1"	108.44	216.88	1,000	87.5(20:1)

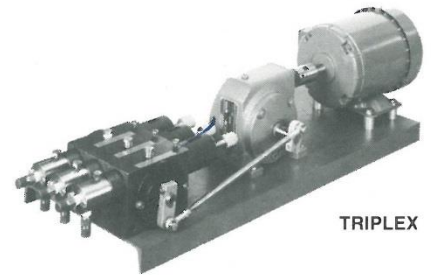
* Volume based on 90% theoretical maximum.

STONEBOR PUMPS
The Maximum in Efficiency
The Minimum in Maintenance

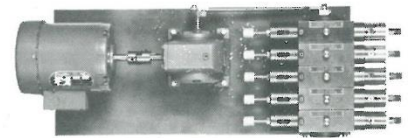
STONEBOR MODEL C – 8E Electric Drive Chemical Injection Pump



SIMPLEX



TRIPLEX



FEATURES

- **Fluid Head.** 300 Series Stainless Steel- 1/4" NPT male connection.
- **Check Valves.** 300 Series Stainless Steel – 1/4" NPT male connections. No "O" Rings to swell, chip, harden or distort.
- **Pump Body.** Anodized Aluminum, oil bath, no daily lubrication required.
- **Plunger-** Stainless Steel, hardened and ground to a mirror finish.
- **Packing.** Non-Adjustable – Not V-type packing to over tighten.
- **Motor.** 1725 rpm, 1/4 HP, TEFC or Explosion-Proof.
- **Ratio.** 20:1
- **Low maintenance Cost.** Only plunger and packing required for normal repair.
- **Options.** Available with 5 Gallons tank and flow gauge

APPLICATION

- Plant Operations
- Research
- Oilfield Applications
- Refineries
- Water Treatment for boilers
- Injection of precise small volume



McFarland Pump Group

921 Seaco Court, Deer Park, TX 77536
Tel: 1-713-864-3366 / Fax: 1-713-864-3252
Email: sales@mcfarlandpump.com , www.mcfarlandpumpgroup.com